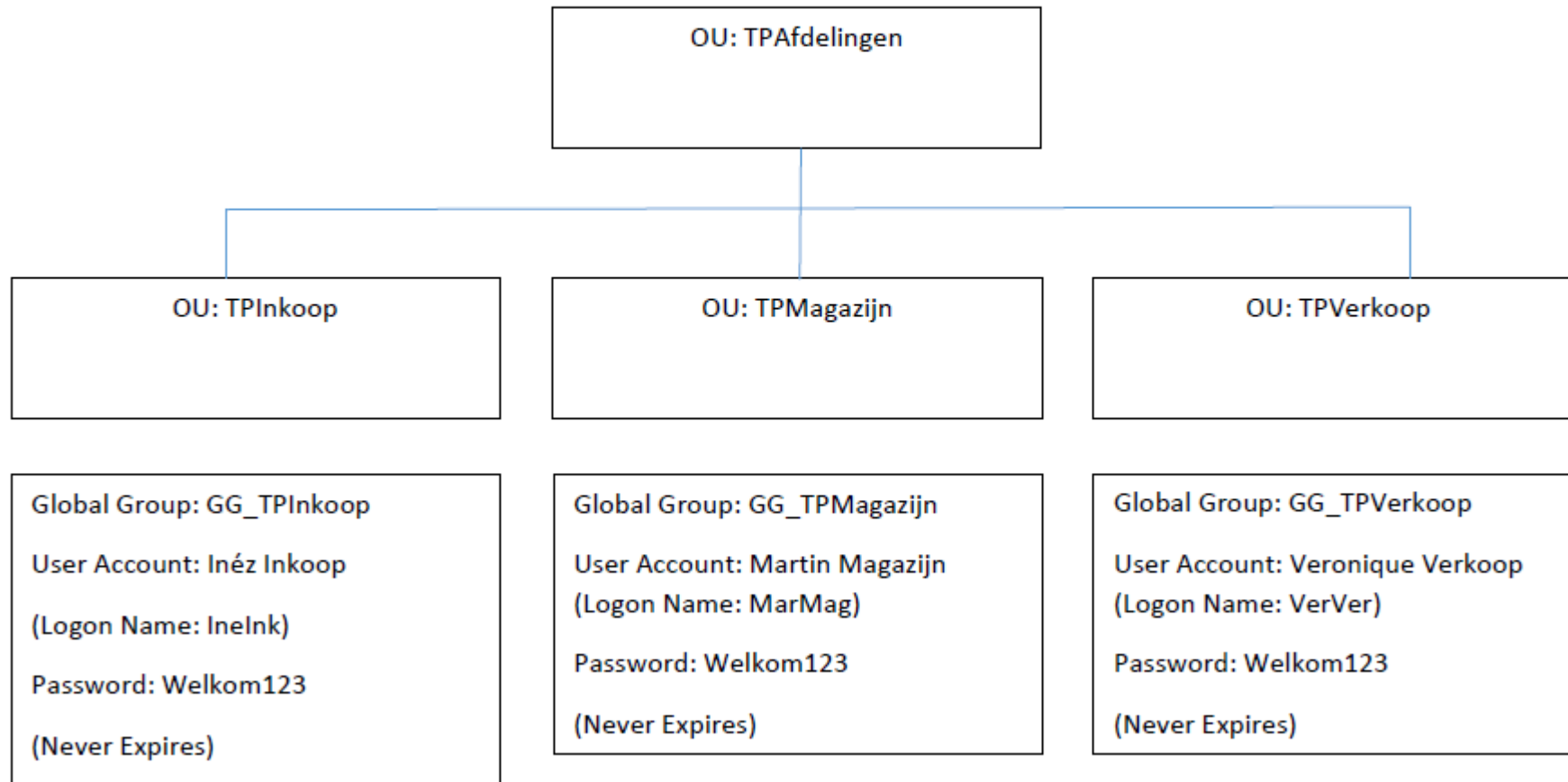




TWINPARTS BV — AFDELINGEN (OU'S) & GROUP POLICY OBJECTS (GPO'S)

HW Hilgersom

Het organogram van TwinParts BV



OPDRACHT

Zorg ervoor dat het Control Panel voor medewerkers van het Magazijn is uitgeschakeld.

GROUP POLICY MANAGEMENT

The screenshot displays the Group Policy Management console. The left-hand tree view shows the hierarchy: Forest: PoliForma.nl > Domains > PoliForma.nl > NB_Afdelingen > NB_Beheer > NB_BeheerGPO > TPMagazijn. The right-hand pane shows the 'TPMagazijn' GPO details, including a table for 'Linked Group Policy Objects'.

Link Order	GPO	Enforced	Link Enabled	GPO Status	WMI Filter	Modified	Domain

A 'New GPO' dialog box is open in the foreground. The 'Name' field contains the text 'TPMagazijnGPO', which is circled in red. The 'Source Starter GPO' dropdown is set to '(none)'. The dialog has 'OK' and 'Cancel' buttons.

GROUP POLICY MANAGEMENT (2)

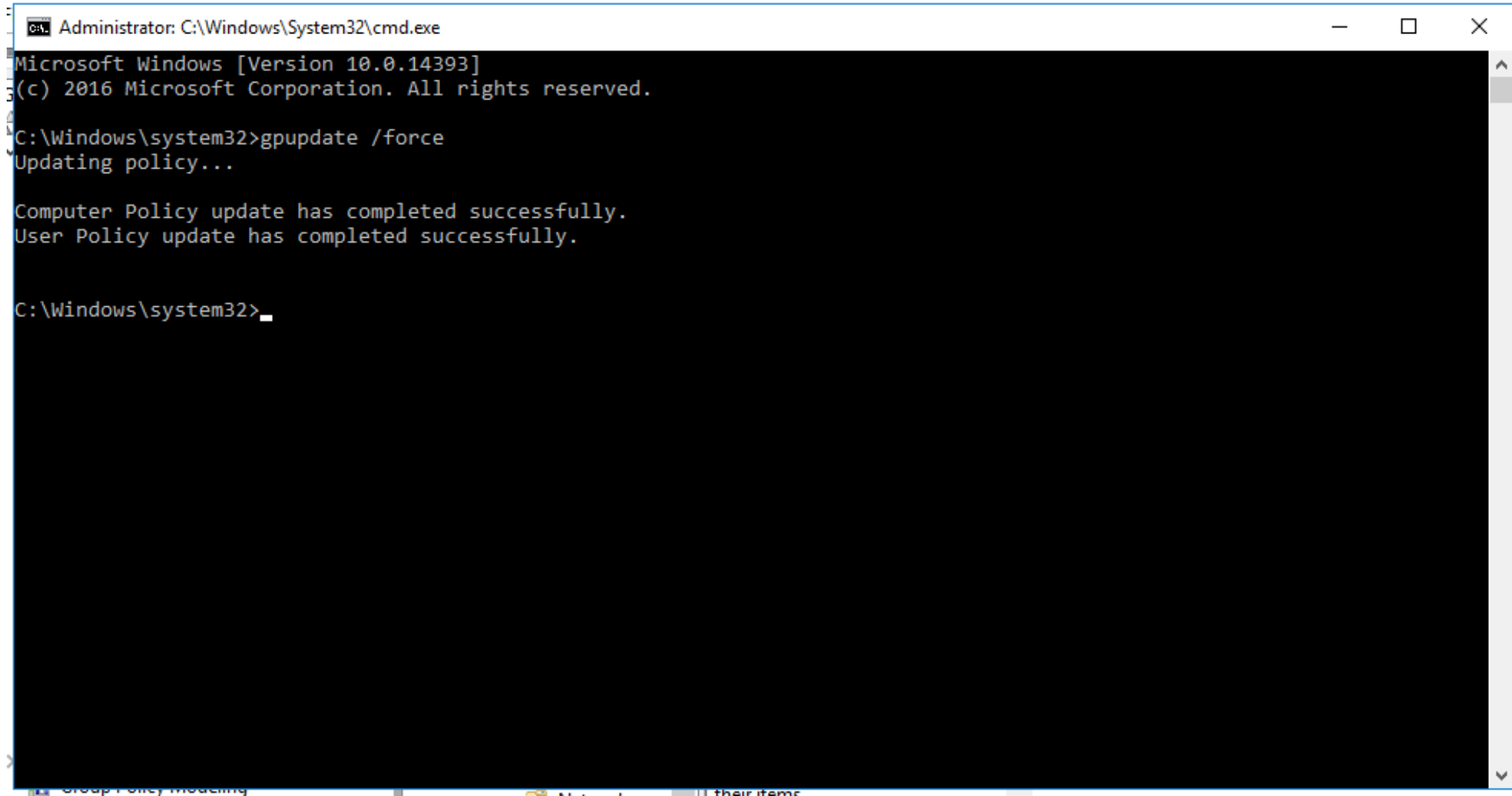
The screenshot displays the Group Policy Management console with the following elements:

- Left Pane:** Shows the hierarchy of Group Policy Objects (GPOs). The 'Group Policy Management' folder is circled in red. Underneath, the 'TPMagazijnGPO' is selected.
- Center Pane:** Shows the 'Group Policy Management Editor' for 'TPMagazijnGPO'. The 'Control Panel' policy is selected in the left pane and is also circled in red. The right pane shows the policy details, including a description and requirements.
- Right Pane:** Shows the configuration options for the 'Prohibit access to Control Panel and PC settings' policy. The 'Enabled' radio button is selected and circled in red. The 'Comment' field is empty, and the 'Supported on' field is set to 'At least Windows 2000'. The 'Options' and 'Help' sections provide detailed information about the policy's effects.

Policy Details:

- Policy Name:** Prohibit access to Control Panel and PC settings
- Setting:** Enabled
- Requirements:** At least Windows 2000
- Description:** Disables all Control Panel programs and the PC settings app. This setting prevents Control.exe and SystemSettings.exe, the program files for Control Panel and PC settings, from starting. As a result, users cannot start Control Panel or PC settings, or run any of their items.
- Options:** This setting removes Control Panel from: The Start screen, File Explorer. This setting removes PC settings from: The Start screen, Settings charm, Account picture, Search results. If users try to select a Control Panel item from the Properties item on a context menu, a message appears explaining that a setting prevents the action.

GPOUPDATE /FORCE



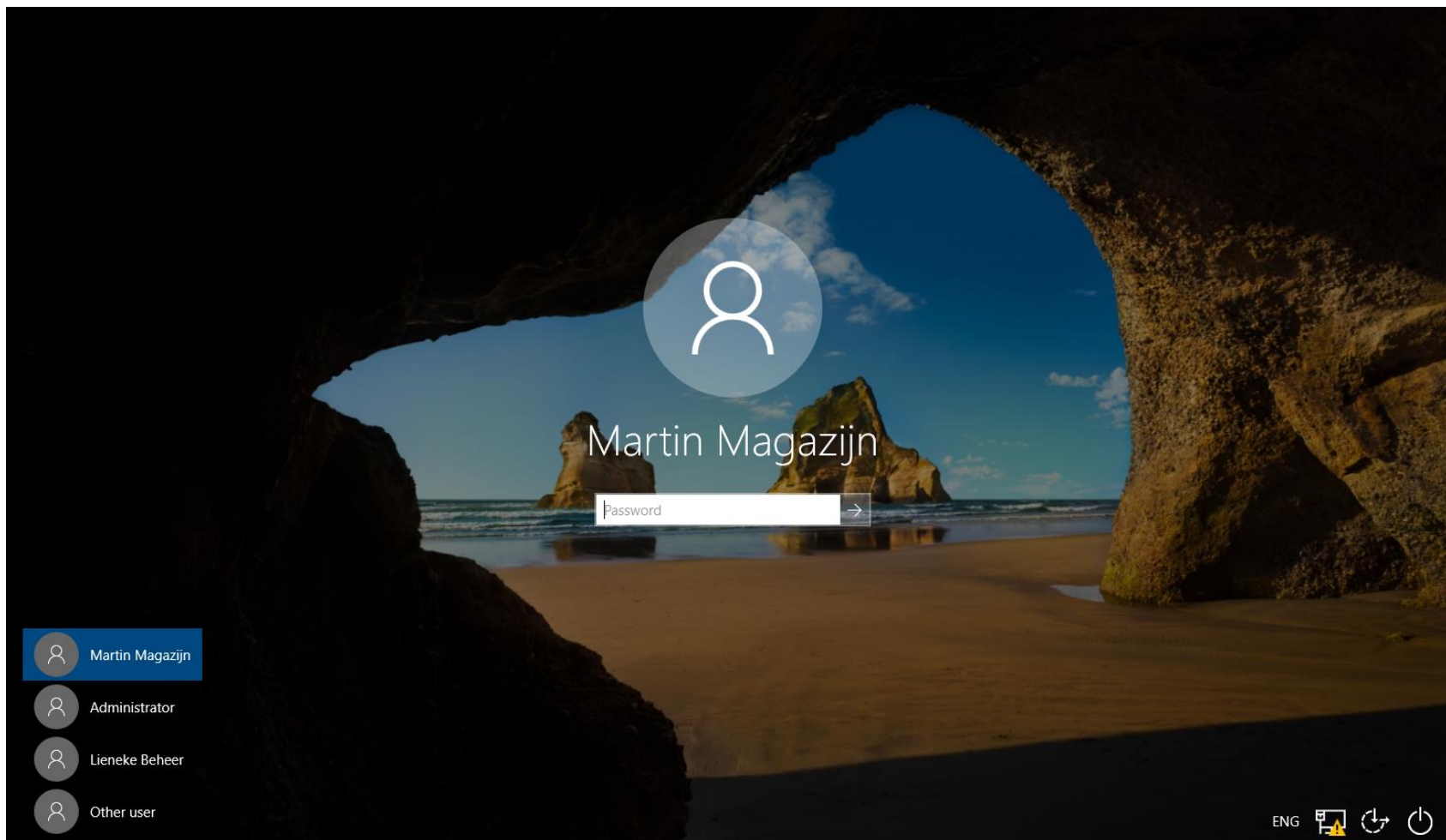
```
Administrator: C:\Windows\System32\cmd.exe
Microsoft Windows [Version 10.0.14393]
(c) 2016 Microsoft Corporation. All rights reserved.

C:\Windows\system32>gpupdate /force
Updating policy...

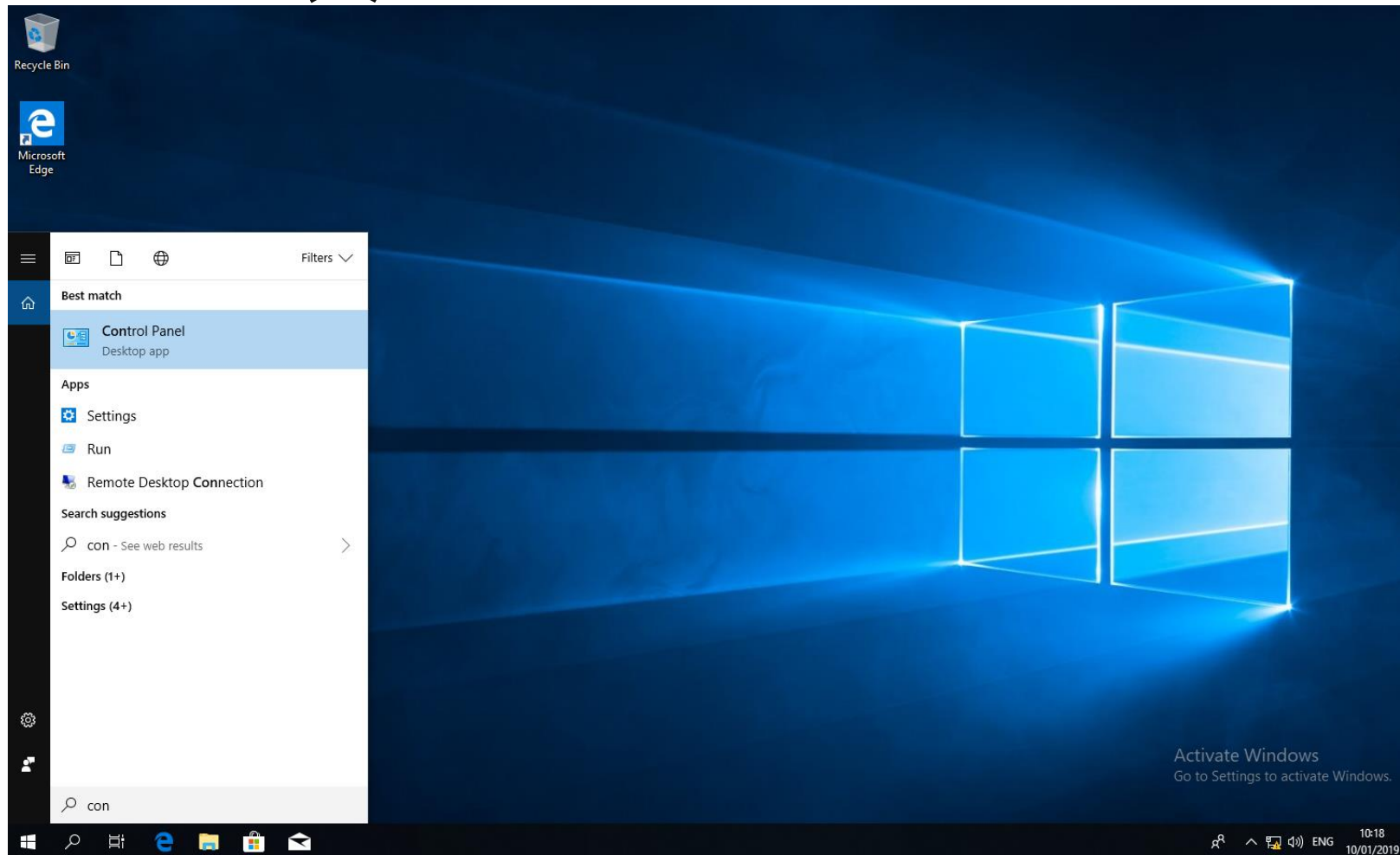
Computer Policy update has completed successfully.
User Policy update has completed successfully.

C:\Windows\system32>
```

TEST IT ...



TEST IT (2)



TEST IT (3) - OK

